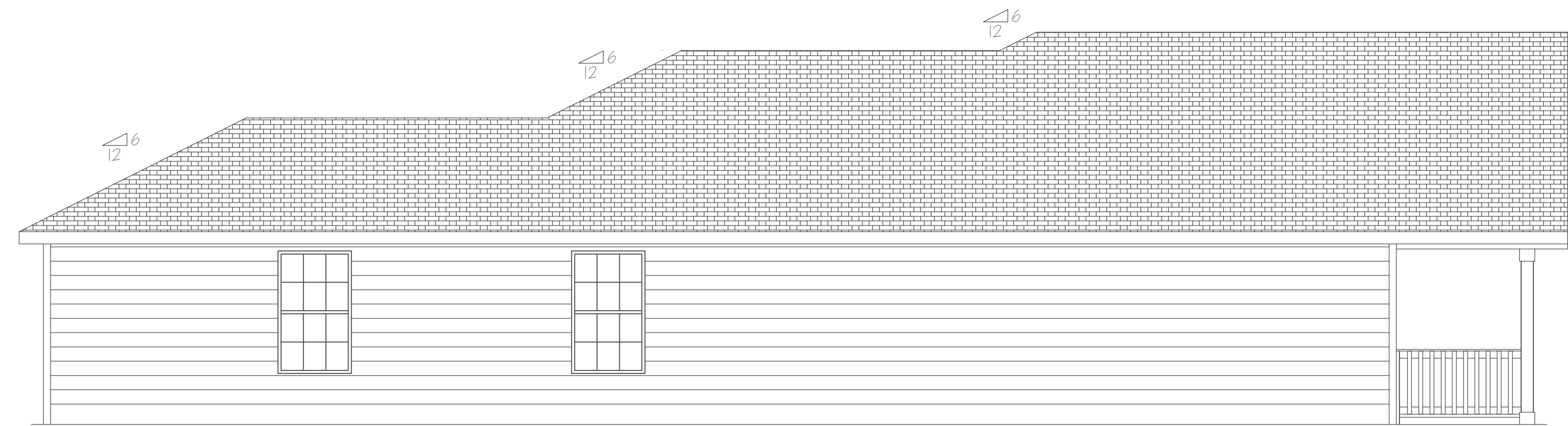


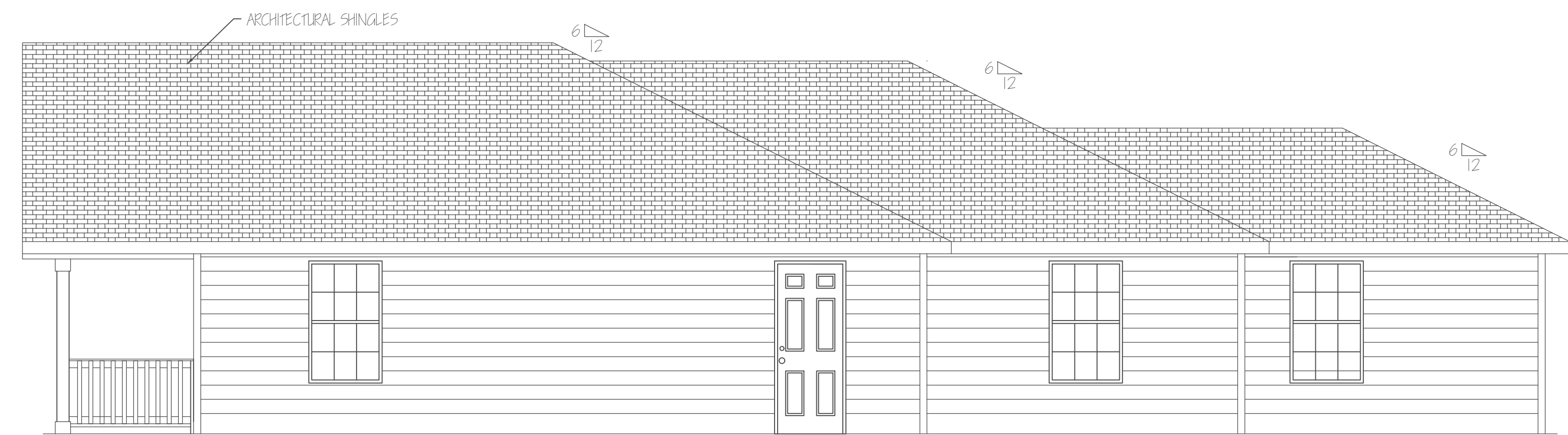
REAR ELEVATION 1/4" = 1'0"



LEFT ELEVATION 1/4" = 1'0"



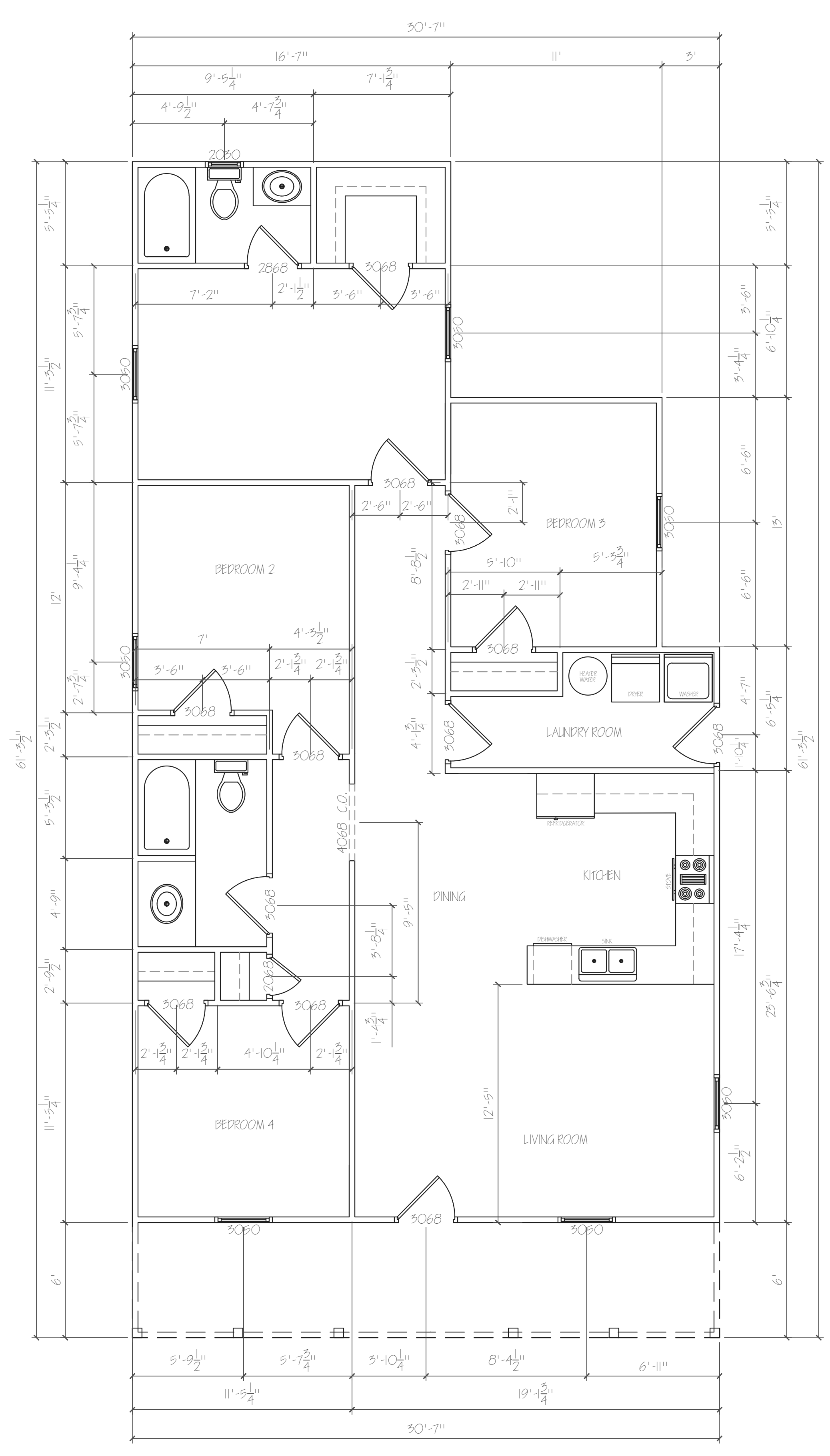
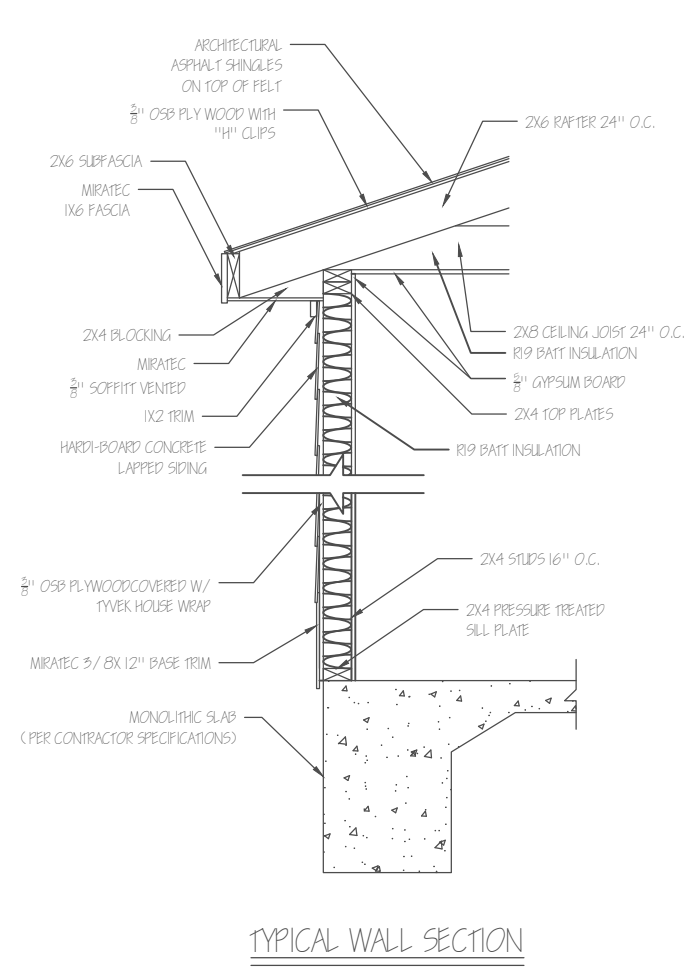
FRONT ELEVATION 1/4" = 1'0"



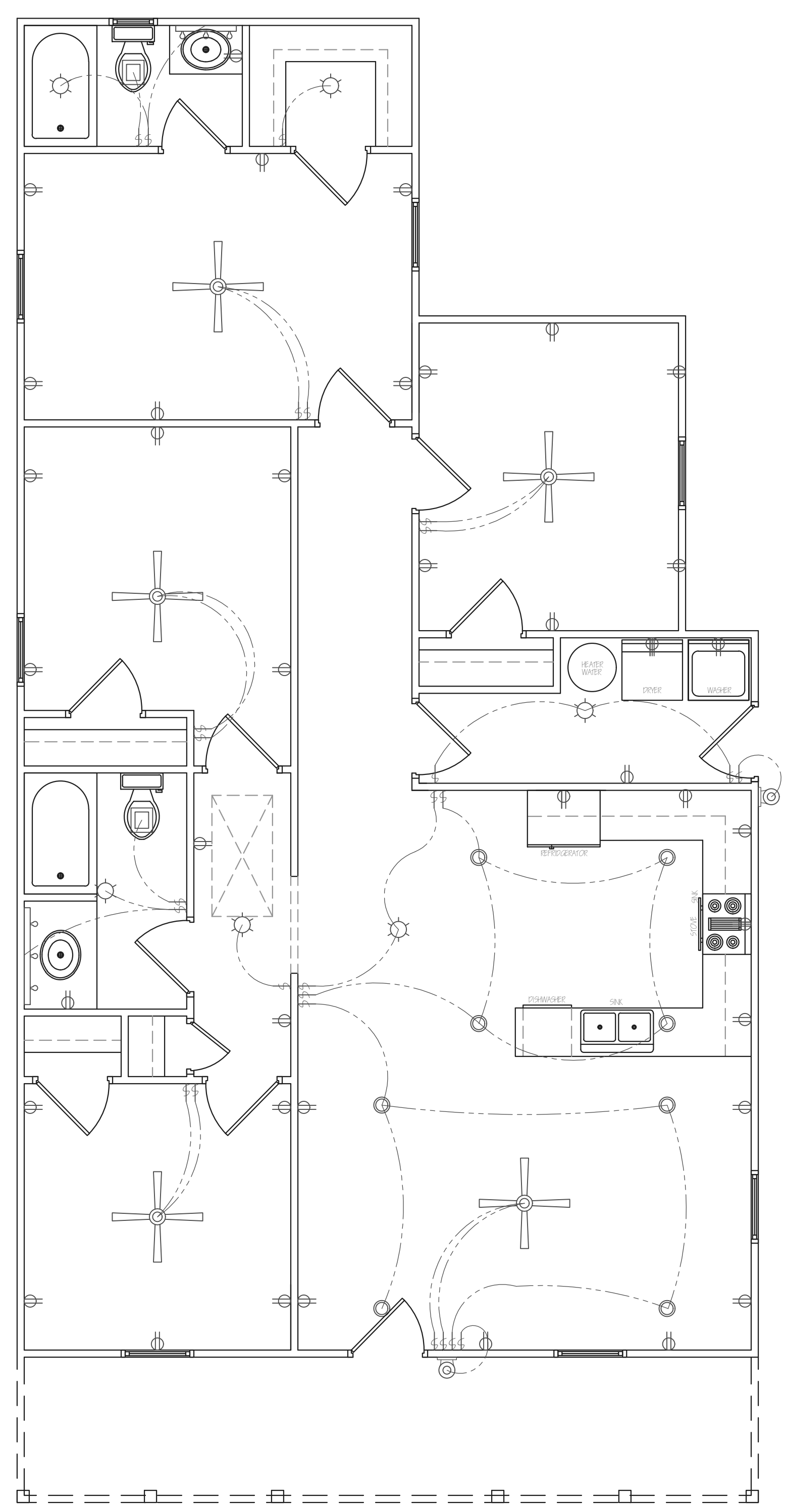
RIGHT ELEVATION 1/4" = 1'0"

REVISION			COLUMBUS AREA HABITAT CONTACT : SCOTT CANNON (706) 593-7566	
1	CONTRACTOR CHANGES	03/16/25	NUEVA VALLEY LOT 2	
			DRAWN BY : AKL (02/08/25) SCALE : 1/4" = 1'0"	
			HOMEOWNERS TO BE DETERMINED	





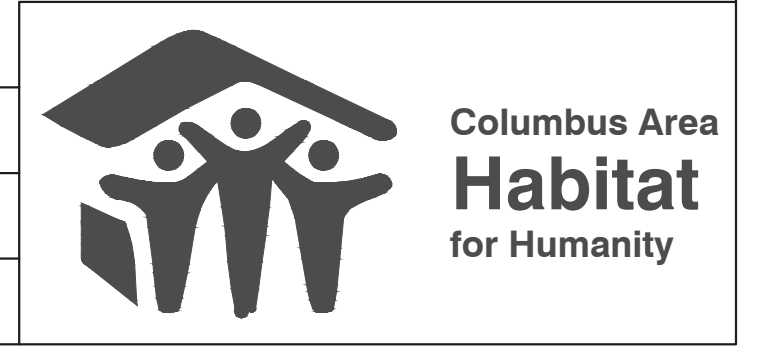
FLOOR PLAN 1/4" = 1'-0"

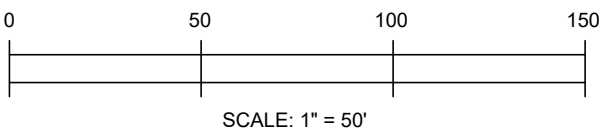
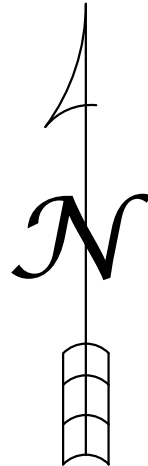
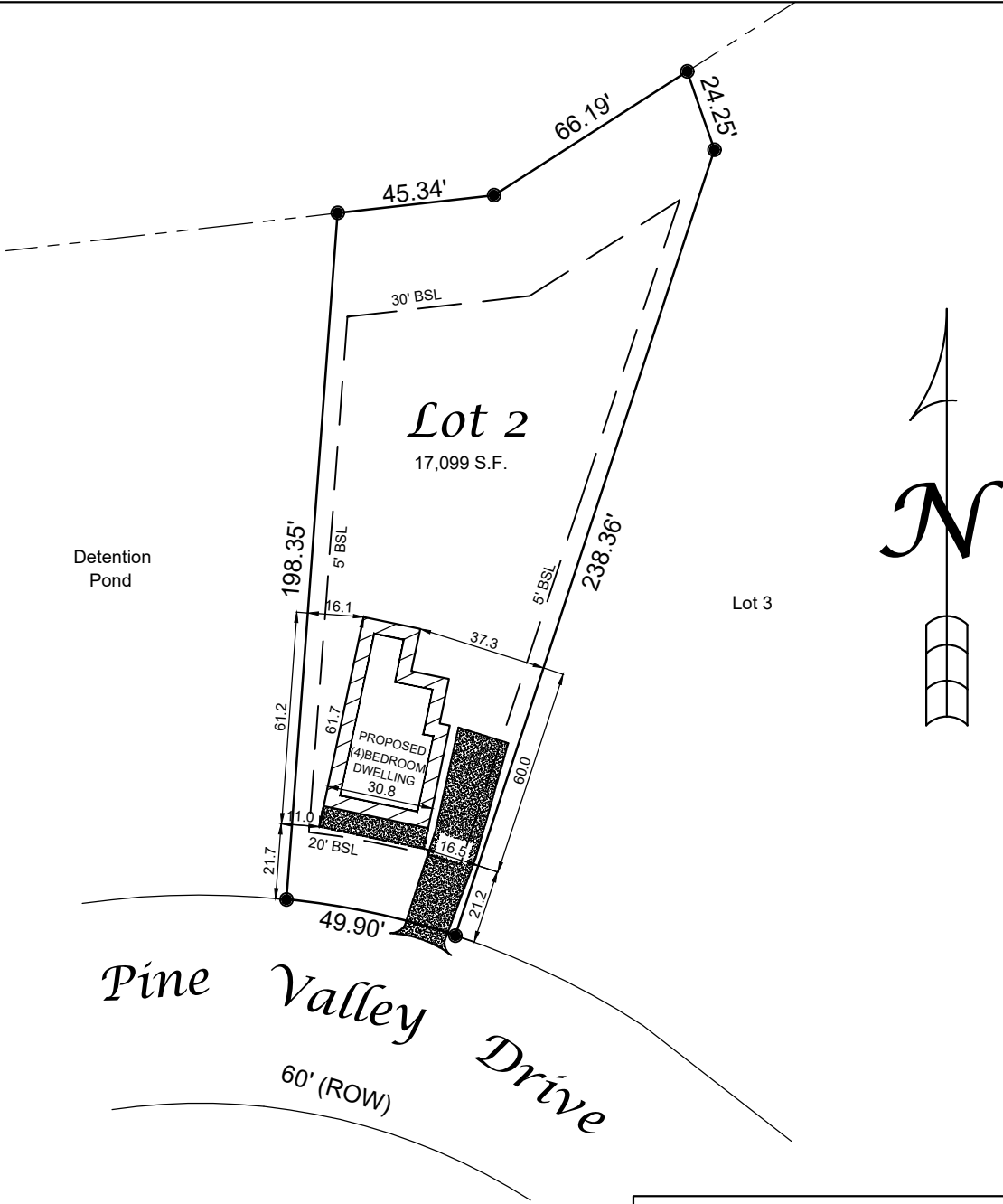


ELECTRICAL PLAN 1/4" = 1'-0"

REVISION		
1	CONTRACTOR CHANGES	03/16/25

COLUMBUS AREA HABITAT
 CONTACT : SCOTT CANNON (706) 593-7566
 NUEVA VALLEY LOT 2
 DRAWN BY : AKL (02/08/25) SCALE : 1/4" = 1'
 HOMEOWNERS
 TO BE DETERMINED





6715 PINE VALLEY DRIVE
 LOT 2 NUEVA VALLEY SUBDIVISION
 PART OF LAND LOT 54
 9th LAND DISTRICT
 CITY OF COLUMBUS
 MUSCOGEE COUNTY, GEORGIA

COLUMBUS AREA HABITAT
 CONTACT : SCOTT CANNON (706) 593-7566
AFLAC HOUSE 2023
 DRAWN BY : AKL (3/08/2025) SCALE : 1" = 50'
HOMEOWNERS



Columbus Area
Habitat
 for Humanity